



U.S. ROBOTICS V.EVERYTHING INF README FILE

New Features

The MDMCRV90 information file now allows the selection of the 230,400 bps DTE speed from Windows. You can only use the 230,400 bps speed if you have an external 25 MHz Courier V.Everything AND a serial card that supports the 230,400 bps DTE rate. If you use the 230,400 bps speed selection from Windows without meeting the previous two conditions your Courier modem will not function.



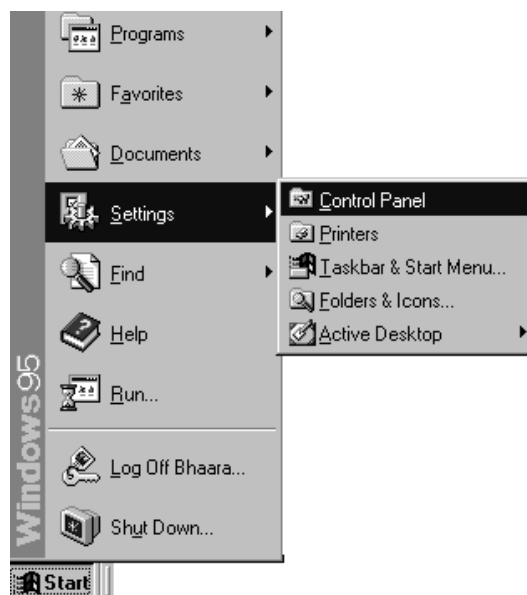
Most PCs do not support a 230,400 bps DTE rate. Consult the documentation that came with your PC or interface card to determine if the 230,400 bps DTE rate is supported.

Unimodem Driver

The V.90 release of the V.Everything modem includes a new Unimodem driver for Windows 95 and Windows NT 4.0. The Unimodem driver for Courier V.90 products is MDMCRV90.INF.

Also there is an updated Unimodem driver for Courier legacy products. The Courier legacy products include any Courier that does not have V.34 capabilities. The Unimodem driver for Courier legacy products is MDMUSRCR.INF.

Go to Start--> Settings--> Control Panel



Double click Modems



Modems

If your modem is already listed in your Control Panel, Modems list, you will need to update your information file to support your V.90 modem. Skip to section **Updating your Courier information file to support V.90.**

If your modem is not listed in Control Panel Modems skip to section **Installing your Courier information file to support V.90.**

Updating Your Courier Information File To Support V.90

If your modem is already listed in your control panel, modems list, you will only need to update your information file to support your V.90 modem.

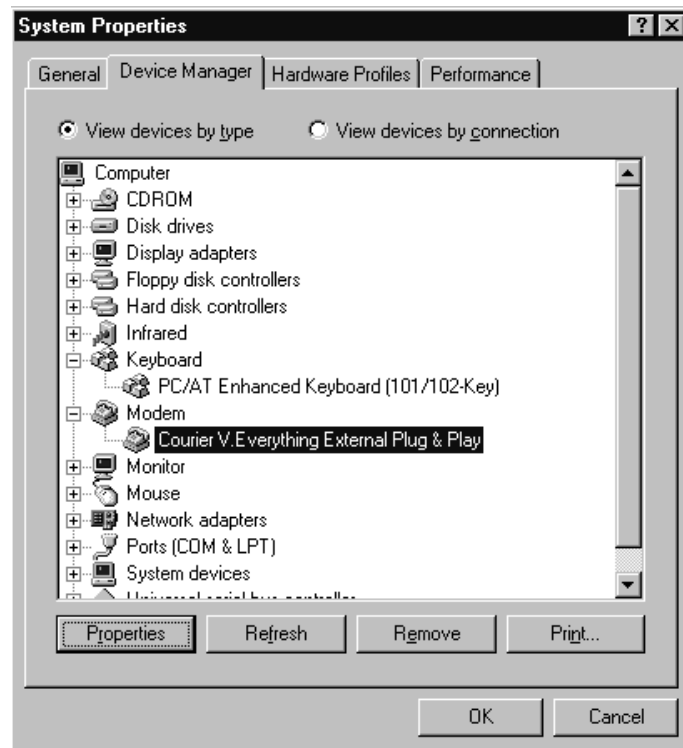
For Windows 95: First copy both MDMCRV90.INF and MDMUSRCR.INF to a disk. Next, follow the steps below.

- 1 Go to Start--> Settings--> Control Panel



System

- 2 Double click System.
- 3 Select the Device Manager tab.
- 4 Double click Modems.



5 Select your Courier and choose Properties



If there is a tab labeled Driver, select it.

If there is no driver tab present, skip to the section **Installing your Courier information file to support V.90.**

- 6 Click the Update Driver button.

A prompt will appear to search for the driver. Insert the disk that has the INF files into your floppy drive.

- 7 Select Yes and click next.

Windows will report that it found an updated driver and list your *Courier V.Everything (V.90&x2)*.

- 8 Click on finish. Your modem will now be listed in Control Panel Modems as a *Courier V.Everything (V.90&x2)*.

The process of updating your information file is complete.

Windows 98 First copy MDMCRV90.INF and MDMUSRCR.INF onto a floppy disk and follow the steps below.

- 1 Go to Start -->Settings --> Control Panel



- 2 Double click System.

- 3 Select the Device Manager tab.

- 4 Double click Modems.

- 5 Select your Courier and choose Properties.

- 6 Select the Driver tab.

- 7 Click the Update button. This will start the Update Device Wizard.

- 8 Click Next.

- 9 Choose "Search for a better driver than the one your device is using right now" and click Next.

- 10 Check the box for "floppy drive", insert the disk containing the INF files into your floppy drive and click Next.

Windows will report that it found an updated driver and list " Courier V.Everything (V.90&X2)".

- 11 Click on finish. Your modem will now be listed in Control Panel Modems as a " Courier V.Everything (V.90&X2)".

The process of updating your information file is complete!

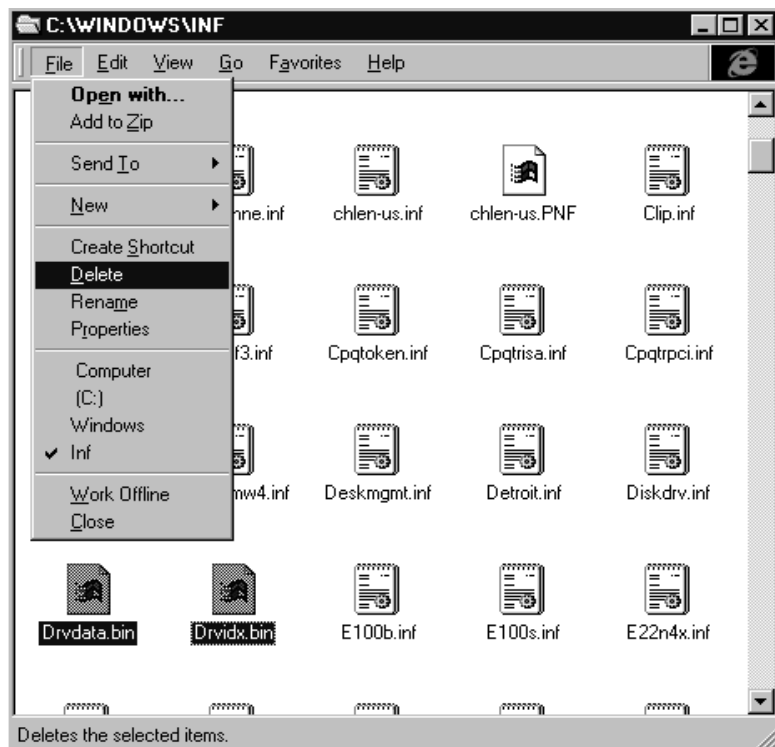
For Windows NT Skip to the next section **Installing your Courier information file to support V.90.**

Installing Your Courier Information File to Support V.90

First copy both MDMCRV.90INF and MDMUSRCR.INF to a disk. Next, follow the steps below.

For Windows 95 or Windows 98

- 1 On your Desktop, double-click My Computer.
- 2 Double click the disk drive where you have installed Windows (usually C:)
- 3 Double click the Windows folder (or the folder where you have installed Windows).
- 4 Go to the View menu and select options. Choose the view tab and select "show all files" . Click OK.
- 5 Double-click the INF folder.
- 6 Insert the disk that has the INF files into your floppy drive.
- 7 Double-click My Computer. Double-click the floppy drive (usually A:).
- 8 From the floppy drive, select both MDMUSRCR.INF and drag them into the INF folder. If you are prompted with a " Confirm File Replace" dialog box, choose Yes.
- 9 Look in the INF folder for these files: **DRVDATA.BIN** and **DRVIDX.BIN**. Select both files by holding the <Ctrl> key and left clicking on each file.
- 10 Go to File menu--> Delete



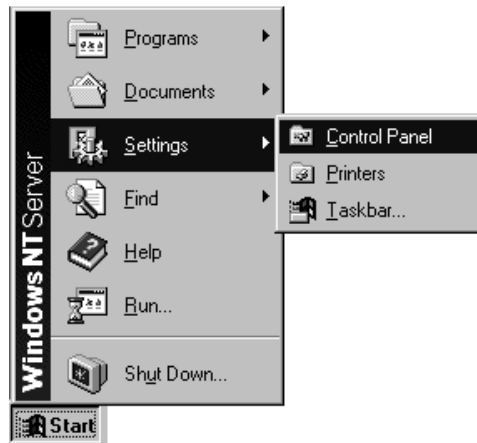
- 11 In the INF folder, look for a file named **CR230K.INF**. If the file is not present, proceed to the next step. If the file exists, select it, go to File menu--> Delete.

- 12 Close all open windows
- 13 Go to Start--> Settings--> Control Panel.
- 14 Double click Modems.
- 15 Highlight any Courier modems you have listed in that screen and choose Remove.
- 16 Reboot your computer.
- 17 Windows should find new hardware and install your Courier as a "Courier V.Everything (V.90&x2)".

The process of updating your information file is complete.

For Windows NT Copy the MDMCRV90.INF file to a floppy diskette and follow the steps below.

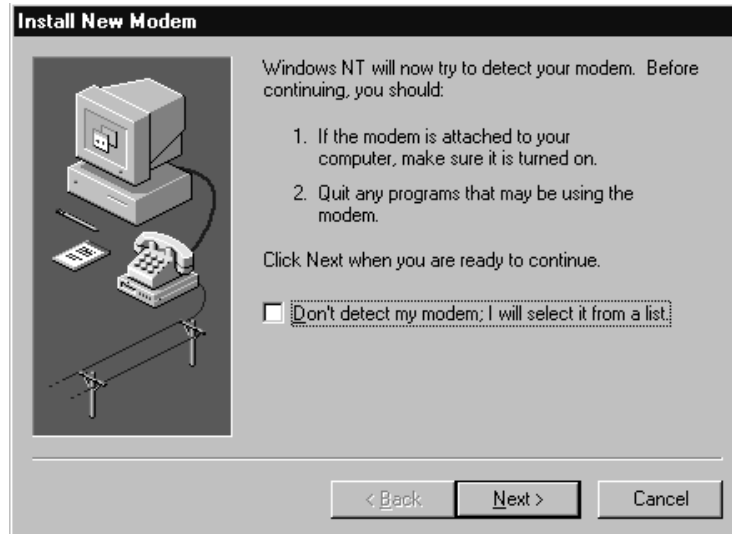
- 1 Go to Start--> Settings--> Control Panel



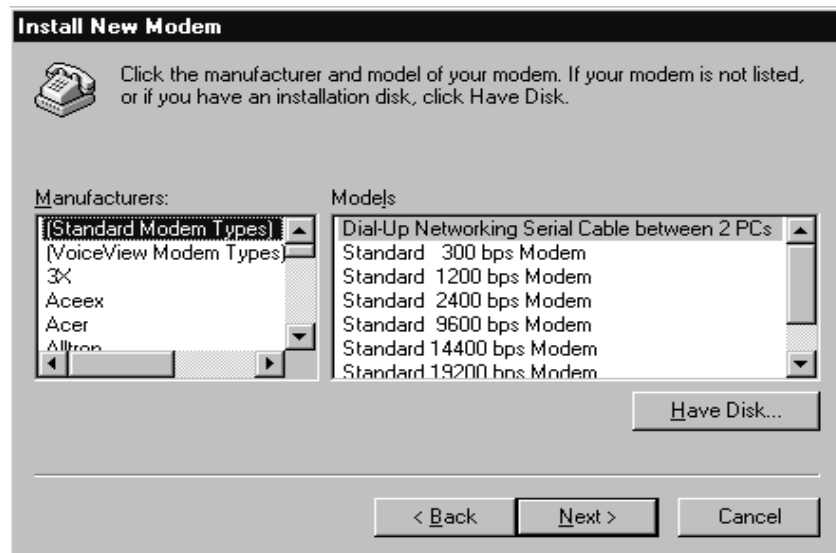
- 2 Double-click Modems.



- 3 Select any Couriers that are installed and click Remove.
- 4 Click on Add. The *Install New Modem* dialog box will appear.



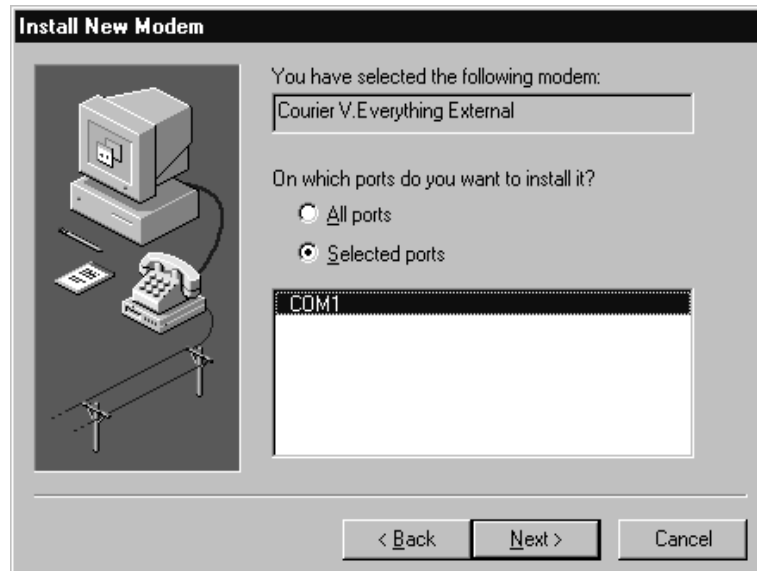
- 5 Check the box that says "Don't detect my modem; I will select it from a list" and click Next.



- 6 Insert the disk that has the INF files into your floppy drive and choose "Have Disk".
You will be prompted for the letter of your floppy drive (usually A:). Click OK.
- 7 If you have an external Courier select "Courier V.Everything EXT (V.90&x2)".

If you have an internal Courier select "Courier V.Everything INT (V.90&x2)". Click next.

- 8 Select the COM port your modem is installed on and click Next.



- 9 Click OK to close Control Panel Modems.
- 10 Windows may inform you that the list of installed modems has changed and that Dialup Networking needs to be reconfigured. You can reconfigure Dialup Networking now.
- 11 Reboot your computer.

The process of updating your information file is complete.

Copyright © 1998, 3Com Corporation. All rights reserved.

Unless otherwise indicated, 3Com registered trademarks are registered in the United States and may or may not be registered in other countries.

3Com, Boundary Routing, LANplex, LinkBuilder, NETBuilder, NETBuilder II, Parallel Tasking, EtherLink, SmartAgent, SuperStack, TokenLink, TokenDisk, Transcend, and ViewBuilder are registered trademarks of 3Com Corporation. EtherDisk, EtherLink II, FDDILink, FMS, and NetProbe are trademarks of 3Com Corporation. 3ComFacts is a service mark of 3Com.

Other brand and product names may be registered trademarks or trademarks of their respective holders.